



**THE POWER PLAN THAT LASTS:
IMPLEMENTING SUSTAINABLE POWER SUPPLY IN
NIGERIA'S DYNAMIC ENVIRONMENT**

**Eyo O. Ekpo
Commissioner (Market, Competition & Rates)
Nigerian Electricity Regulatory Commission**

6th Business Law Conference

19th June 2012

Outline

- Introduction
- Overview of the Nigerian Electricity Supply Industry
- Nigeria's Electrical Reform Agenda
- Privatisation
- Post Privatisation Design of the Electricity Market
- Industry Agreements
- Cost Reflective Price Setting: MYTO II
- Bulk Generation Procurement
- Gas Supply and Pricing in the NESI
- A Little bit of Futurology
- Challenges to a Bright Future
- Opportunities for Legal Practitioners in the Emerging Industry



Introduction

- Access to electricity supply in Nigeria is currently less than 50% with total customer figures at about 5.4m
- Historical challenges to power sector development include:
 - Prolonged FG presence at commanding heights
 - Consistent under-investment since the early 80's
 - Poor management of the gas advantage
- Obvious decline and near-collapse in the sector necessitates the ongoing electric power sector reform agenda

Overview of the Nigerian Electricity Supply Industry

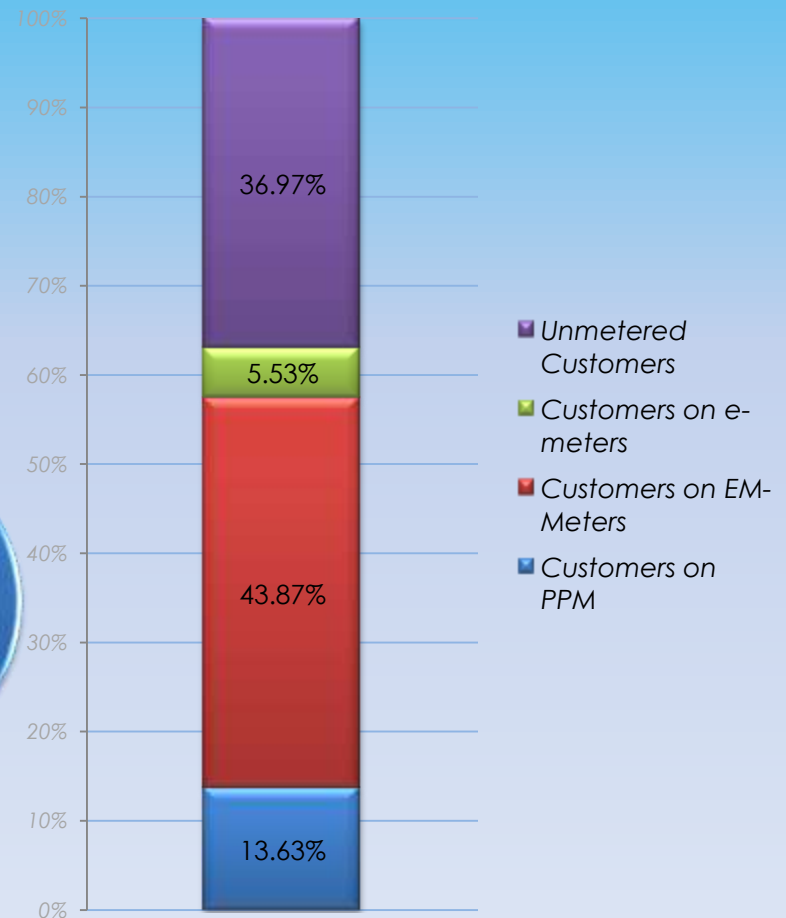
- Power sector reform started in 2000 with the Electric Power Implementation Committee (EPIC)
- The EPSR Act was drafted in 2000 and became law in March 2005
- NEPA was transformed into PHCN Plc and later unbundled into 6 Gencos, TCN and 11 Discos
- NERC was inaugurated in October 2005 as sector regulator
- Relevant subsidiary legislation has been developed
- Critically, procurement and liability management companies (NBET/NELMCO) have been incorporated and operationalised

Overview of the Nigerian Electricity Industry (Cont'd)

5,390,318
Total Number of Disco Customers

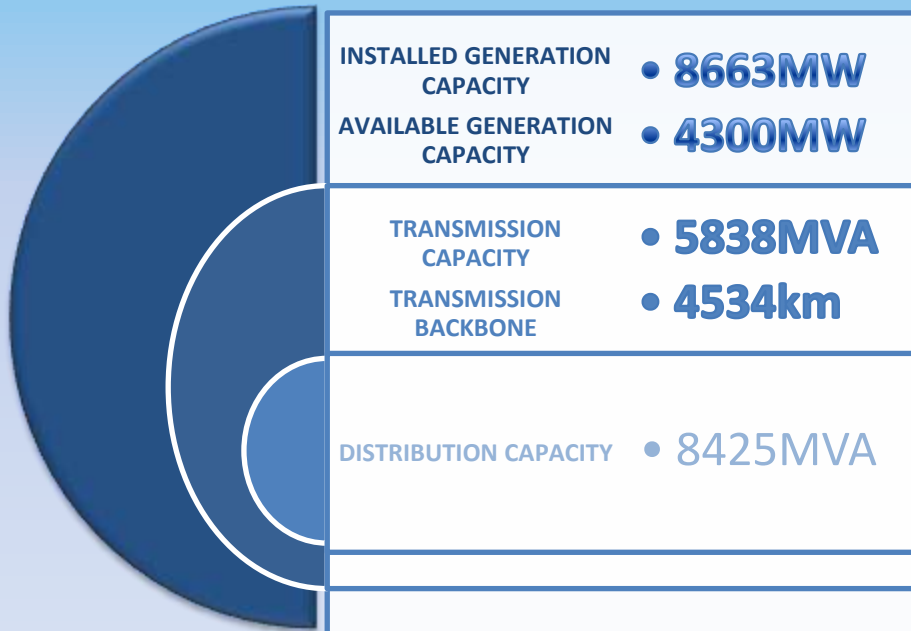
Metered Customers in the NESI

%

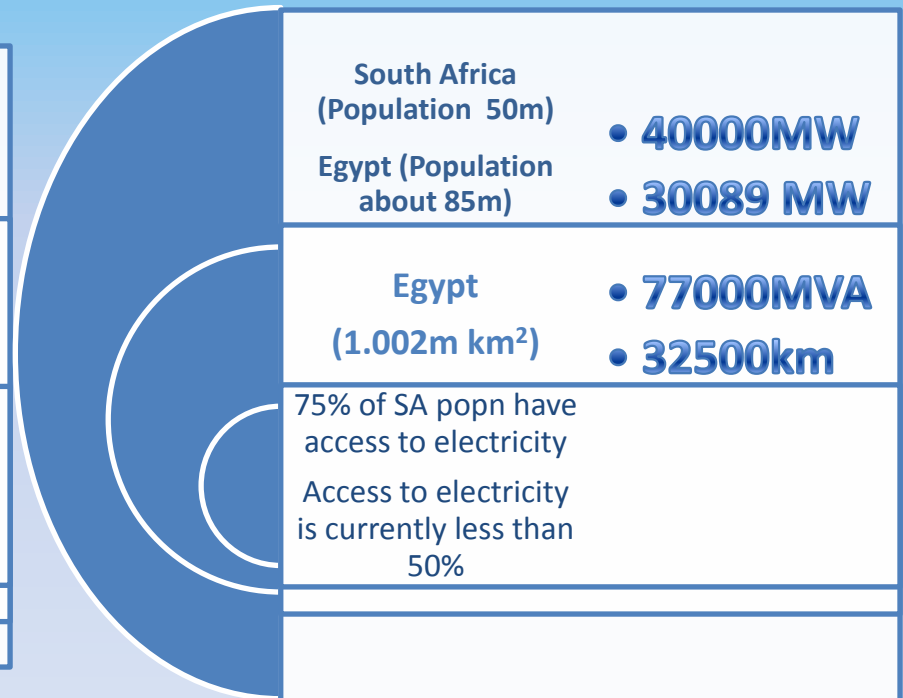


Where we are VS Where we should be

Where we are



Where we should be



Nigeria should currently be generating 100GW, requiring about \$300bn

Nigeria's Electrical Reform Agenda

- The Government's reform mission:
 - improve efficiency
 - encourage private sector participation
 - strengthen the power sector as Nigeria's engine for development
- NERC's vision for its achievement:
 - promotion of competition (but what kind?)
 - good corporate governance & financial discipline
 - social accountability & efficient use of resources

Privatisation

- Private sector intervention is inevitable (Why?)
- Strategies to be adopted during the privatisation process include:

- Core Investor Sale (sale of equity)



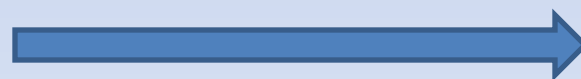
DISCOS

- Management Contract



TCN

- Core Investor Sale



GENCOS

Concession

Asset Sale

Privatisation Methodology

Discos:

- Emphasizes technical, financial & managerial competence of operators
- loss reduction & investments are the main parameters for assessing potential bidders

TCN:

- 5 year management contract
- Management contractor to oversee the entire TCN operations including market & system operations

Gencos:

- Hydro Stations for concession
- 4 thermal stations for core investor sale
- 3 non-operational power stations for asset sale

Privatisation cont'd...

Key Reform & Privatisation Enablers:

- Sustainable and cost reflective tariffs
- Transparent and consultative regulatory and transactional process
- Public Enlightenment
- Set-up and funding of Bulk Trader and NELMCO
- FGN providing additional and ACCESSIBLE incentives to the power sector

Post Privatisation Design of the Electricity Market

The competitive market for electricity in Nigeria will evolve through the following stages:

- Pre Transitional Stage (where we are today);
- Transitional stage (where we are about to move into)
 - entry of new generation
 - introduction of competition for entering the IPP market
 - electricity trading through bilateral contracts (industry agreements)

Post Privatisation Design cont'd...

- Medium Term Market:
 - introduction of generation competition
 - competition in retail sales within each Disco
 - flexibility in electricity trading arrangements through the implementation of a balancing market

Industry Agreements

- The BPE has been working with NERC and other stakeholders to prepare commercially and financially viable industry documents:
 - Ancillary Services Agreement
 - Grid Connection Agreement
 - Market Participation Agreement
 - Transmission Use of System Agreement
 - Power Purchase Agreement (Hydro & Thermal)
 - Vesting Contract

Industry Agreements cont'd...

- Gas Sale Aggregation Agreement (GSAA)
- Gas Transportation Agreement (GTA)
- Concession Agreement (for hydros)
- Share Sale Agreement
- Shareholders Agreement
- Mgt Contract for TCN PLC
- Performance Agreement
- NERC licences (Genco, Disco, BT, TSP, SO)

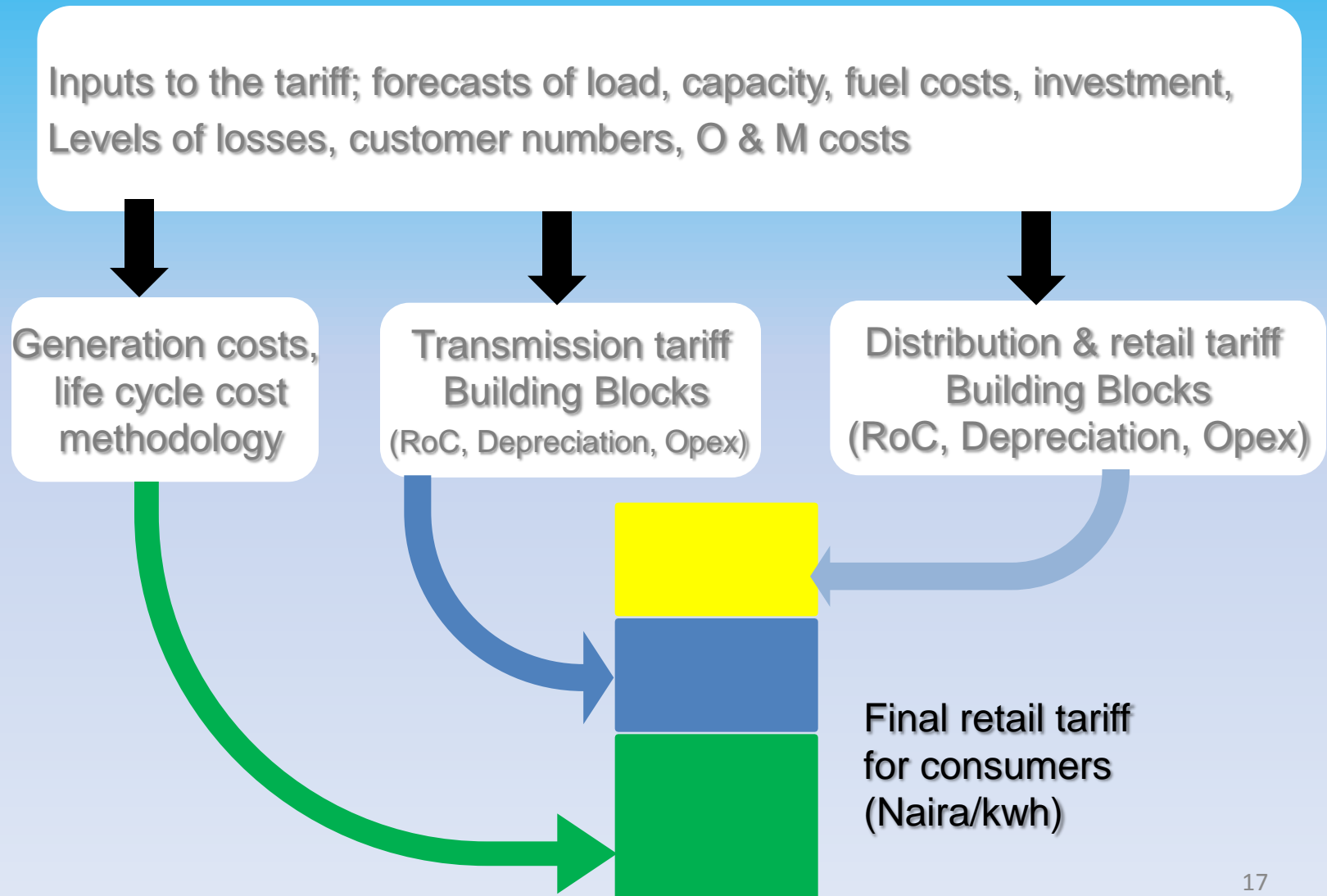
Cost Reflective Pricing: MYTO II

- MYTO II took effect on 1st June, 2012
- The key features are:
 - Full recovery of prudent costs
 - Attention to major social concerns:
 - ❖ Affordability
 - ❖ Metering
 - ❖ Estimated Billing
 - ❖ Loss Reduction
 - ❖ General Customer Care

Multi Year Tariff Order (MYTO)

- A unified way to determine total industry revenue requirement.
- Provides a 15-year plan for tariff in the sector due to long gestation period required for investors to recoup investment.
- MYTO is used to set wholesale, transmission and retail electricity prices in the NESI.
- Detailed list of retail prices can be found behind this presentation

The Process used to construct the MYTO and set the retail tariffs



Pricing Concepts in the MYTO

Generation Pricing

1. Based on the most economically efficient new entrant.
2. Existing PPAs will continue to operate and market participants paid according to their PPAs
3. Wholesale price are in two parts: **Capacity** and **Energy** charges, escalating with inflation and exchange rate, gas prices and available generation capacity and attendant costs

Transmission and Distribution Pricing

1. NERC has used a building blocks approach in setting tariff for transmission and distribution.
2. Building blocks approach is used extensively in regulated industries as it provides the benefits of both price cap and incentive based regulation.
3. It is simple a way of bringing together all of the industry's costs in a consistent accounting framework.

Rationale for the Price Increase-Cost-Reflective Tariff

- Full efficient cost recovery is mandated by the S.76, EPSR Act, 2005
- All businesses to remain in business and grow must cover their costs and provide a reasonable return
- Without a **cost-reflective tariff**, no utility provider will enter any market, however large the market
- The absence of a cost-reflective tariff is a key reason for the failure of the power sector to serve Nigerians for the past three decades



Bulk Generation Procurement

- NERC has so far issued over 40 licences to potential IPPs for the supply of new electricity on-grid generation capacity of more than 10,000MW
- Not one is in business because of unacceptable commercial market/regulatory risks
- All the proposals were unsolicited, and the resulting cost could be significant if this un-orderly approach continues
- NERC's solution is to use its regulatory instruments to evolve the market towards the procurement framework already mandated by the Market Rules

Bulk Procurement Generation cont'd...

- A framework comprising guidelines and regulations have been developed to govern bulk generation procurement
- They provide for processes to be followed by a buyer in procuring additional electric generation capacity
- This framework establishes a systematic, transparent and competitive process for procuring generation capacity at least cost to consumers
- Already on NERC website for comments

Gas Supply and Pricing in the NESI

- Gas as a feed stock for thermal generation constitutes about 50% of total cost of producing power in Nigeria
- This is significant considering that 80% of power stations in Nigeria are gas based
- This will immediately increase and remain well above 90% in the future
- Adequate gas supply to power generation is central to achieving the Commission's objective of electricity availability, accessibility and affordability

The Next Decade....

- A lot more capacity in the system
- A lot more investment – by 2017, the NESI will be averaging \$20bn invested per annum (7,500MW) and rising
- Competitive entry for embedded and on-grid generation
- A huge amount of project planning, engineering, construction and financing will be generated
- A lot more disputes within daily operations and in the rest of the market generally

The Next Decade cont'd...

- Cross – sectional disaggregation
 - Discos will break up along local lines
 - Regional power pools with their own independent SO's will evolve
 - Regulatory capacity will be more wide spread
 - State governments will have to develop capacity to regulate market operations carried on purely within their boundaries
- NERC to remain relevant will evolve into managing a framework that relies on its capacity to identify, anticipate and eliminate potential harm either directly but probably more often through industry panels, committees and prudent /judicious use of its portfolio of regulatory instruments

Challenges to a Bright Future

- Lack of symmetric reform in the domestic gas market
- Lack of understanding of reform imperatives by the domestic banking sector
- Inconsistency in political will
- Development of the rule of law and respect by stakeholders, especially politicians for institutions created to provide certainty in the industry

Opportunities for Legal Practitioners in the Emerging Industry

- New business opportunities & prospects are emerging as the NESI undergoes reforms aimed at bringing about a robust industry with efficient market structures that will ensure safe, adequate, reliable and affordable electricity
- Legal Practitioners are expected to provide a robust backbone/support services for the emerging market
- NERC estimates that the NESI will grow from N300 billion in revenue today to over N1.5 trillion by 2016



THANK YOU

EEKPO@NERCNG.ORG

Abuja Disco - Fixed Charge

Tariff Code	2012	2013	2014	2015
	<u>Fixed Charge, N / Month</u>			
Residential R1	-	-	-	-
Residential R2	500	702	986	1,384
Residential R3	37,527	52,696	73,997	103,908
Residential R4	113,358	136,030	191,016	268,228
Commercial C1	500	702	986	1,384
Commercial C2	34,020	47,772	67,082	94,197
Commercial C3	102,767	123,321	173,169	243,168
Industrial 1	10,000	10,000	14,042	19,718
Industrial D2	101,113	101,113	141,985	199,378
Industrial D3	102,767	123,321	173,169	243,168
Special 1	500	702	986	1,384
Special 2	35,938	43,125	60,557	85,035
Special 3	45,313	54,375	76,354	107,218
Street Lighting S1	500	600	843	1,183

Abuja Disco- Energy Charge

	2012	2013	2014	2015
Tariff Code	<u>Energy Charge, N / kWh</u>			
Residential R1	4.00	4.00	4.00	4.00
Residential R2	11.74	12.62	13.25	13.91
Residential R3	22.62	22.62	23.75	24.94
Residential R4	22.62	22.62	23.75	24.94
Commercial C1	16.56	16.56	17.39	18.26
Commercial C2	21.03	21.03	22.08	23.18
Commercial C3	21.03	21.03	22.08	23.18
Industrial 1	16.97	16.97	17.81	18.70
Industrial D2	22.04	22.04	23.14	24.30
Industrial D3	22.04	22.04	23.14	24.30
Special 1	16.24	16.24	17.05	17.90
Special 2	16.24	16.24	17.05	17.90
Special 3	16.24	16.24	17.05	17.90
Street Lighting S1	12.47	13.41	14.08	14.78

Benin Disco - Fixed Charge

Tariff Code	2012	2013	2014	2015
	<u>Fixed Charge, N / Month</u>			
Residential R1	-	-	-	-
Residential R2	500	750	1,500	1,800
Residential R3	25,018	37,527	49,143	64,355
Residential R4	101,631	133,091	174,289	228,239
Commercial C1	500	1,000	1,310	1,715
Commercial C2	22,680	34,020	44,551	58,341
Commercial C3	141,748	141,748	185,625	243,085
Industrial 1	500	1,000	1,310	1,715
Industrial D2	139,466	153,413	200,901	263,089
Industrial D3	141,748	155,923	204,188	267,394
Special 1	500	1,000	1,310	1,715
Special 2	34,375	37,813	49,517	64,845
Special 3	40,625	44,688	58,520	76,635
Street Lighting S1	500	1,000	1,310	1,715

Benin Disco – Energy Charge

	2012	2013	2014	2015
Tariff Code	<u>Energy Charge, N / kWh</u>			
Residential R1	4.00	4.00	4.00	4.00
Residential R2	11.37	11.37	11.94	12.54
Residential R3	20.28	20.28	21.29	22.36
Residential R4	20.28	20.28	21.29	22.36
Commercial C1	15.84	15.84	16.63	17.46
Commercial C2	18.85	18.85	19.79	20.78
Commercial C3	18.85	18.85	19.79	20.78
Industrial 1	15.21	15.21	15.97	16.77
Industrial D2	19.76	19.76	20.75	21.79
Industrial D3	19.76	19.76	20.75	21.79
Special 1	14.56	14.56	15.29	16.05
Special 2	14.56	14.56	15.29	16.05
Special 3	14.56	14.56	15.29	16.05
Street Lighting S1	15.00	15.00	15.75	16.54

Enugu Disco - Fixed Charge

Tariff Code	2012	2013	2014	2015
	<u>Fixed Charge, N / Month</u>			
Residential R1	-	-	-	-
Residential R2	500	650	874	1,176
Residential R3	18,787	24,424	32,847	44,175
Residential R4	117,416	117,416	157,910	212,369
Commercial C1	500	650	874	1,176
Commercial C2	17,032	22,141	29,777	40,046
Commercial C3	106,446	106,446	143,157	192,528
Industrial 1	1,000	1,300	1,748	2,351
Industrial D2	104,733	104,733	140,852	189,428
Industrial D3	106,446	106,446	143,157	192,528
Special 1	500	650	874	1,176
Special 2	37,500	37,500	50,433	67,826
Special 3	46,935	46,935	63,121	84,890
Street Lighting S1	500	650	874	1,176

Enugu Disco – Energy Charge

Tariff Code	2012	2013	2014	2015
	<u>Energy Charge, N / kWh</u>			
Residential R1	4.00	4.00	4.00	4.00
Residential R2	12.89	14.82	15.57	16.34
Residential R3	23.43	23.43	24.60	25.83
Residential R4	23.43	23.43	24.60	25.83
Commercial C1	17.28	17.28	18.14	19.05
Commercial C2	21.78	21.78	22.87	24.01
Commercial C3	21.78	21.78	22.87	24.01
Industrial 1	17.57	17.57	18.45	19.37
Industrial D2	22.83	22.83	23.97	25.17
Industrial D3	22.83	22.83	23.97	25.17
Special 1	16.82	19.34	20.31	21.33
Special 2	16.82	19.34	20.31	21.33
Special 3	16.82	19.34	20.31	21.33
Street Lighting S1	12.90	14.84	15.58	16.36

Ibadan Disco - Fixed Charge

Tariff Code	2012	2013	2014	2015
	<u>Fixed Charge, N / Month</u>			
Residential R1	-	-	-	-
Residential R2	500	500	625	781
Residential R3	18,764	18,764	23,453	29,314
Residential R4	117,267	117,267	146,573	183,202
Commercial C1	500	500	625	781
Commercial C2	17,010	17,010	21,261	26,574
Commercial C3	106,311	106,311	132,879	166,086
Industrial 1	500	500	625	781
Industrial D2	104,600	104,600	130,740	163,412
Industrial D3	106,311	106,311	132,879	166,086
Special 1	500	500	625	781
Special 2	33,594	33,594	41,989	52,482
Special 3	46,875	46,875	58,589	73,231
Street Lighting S1	500	500	625	781

Ibadan Disco – Energy Charge

Tariff Code	2012	2013	2014	2015
	<u>Energy Charge, N / kWh</u>			
Residential R1	4.00	4.00	4.00	4.00
Residential R2	12.30	12.91	13.56	14.23
Residential R3	23.40	24.57	25.80	27.09
Residential R4	23.40	24.57	25.80	27.09
Commercial C1	15.48	16.25	17.07	17.92
Commercial C2	21.75	22.84	23.98	25.18
Commercial C3	21.75	22.84	23.98	25.18
Industrial 1	17.55	18.43	19.35	20.32
Industrial D2	22.80	23.94	25.14	26.39
Industrial D3	22.80	23.94	25.14	26.39
Special 1	16.80	17.64	18.52	19.45
Special 2	16.80	17.64	18.52	19.45
Special 3	16.80	17.64	18.52	19.45
Street Lighting S1	12.90	13.55	14.22	14.93

Jos Disco - Fixed Charge

Tariff Code	2012	2013	2014	2015
	<u>Fixed Charge, N / Month</u>			
Residential R1	-	-	-	-
Residential R2	500	775	1,163	1,744
Residential R3	18,764	29,083	43,625	65,438
Residential R4	117,267	181,764	272,646	408,969
Commercial C1	500	775	1,163	1,744
Commercial C2	17,010	26,366	39,548	59,322
Commercial C3	106,311	164,782	247,173	370,760
Industrial 1	900	1,395	2,093	3,139
Industrial D2	104,600	162,129	243,194	364,791
Industrial D3	106,311	164,782	247,174	370,760
Special 1	900	1,395	2,093	3,139
Special 2	40,625	62,969	94,453	141,680
Special 3	46,875	72,656	108,984	163,477
Street Lighting S1	900	1,395	2,093	3,139

Jos Disco – Energy Charge

Tariff Code	2012	2013	2014	2015
	<u>Energy Charge, N / kWh</u>			
Residential R1	4.00	4.00	4.00	4.00
Residential R2	12.99	13.63	14.32	15.03
Residential R3	23.40	24.57	25.80	27.09
Residential R4	23.40	24.57	25.80	27.09
Commercial C1	17.00	17.85	18.74	19.68
Commercial C2	21.75	22.84	23.98	25.18
Commercial C3	21.75	22.84	23.98	25.18
Industrial 1	17.00	17.84	18.74	19.68
Industrial D2	22.80	23.94	25.14	26.39
Industrial D3	22.80	23.94	25.14	26.39
Special 1	16.80	17.64	18.52	19.45
Special 2	16.80	17.64	18.52	19.45
Special 3	16.80	17.64	18.52	19.45
Street Lighting S1	17.00	17.00	17.85	18.74

Kaduna Disco - Fixed Charge

Tariff Code	2012	2013	2014	2015
	<u>Fixed Charge, N / Month</u>			
Residential R1	-	-	-	-
Residential R2	500	800	1,280	2,048
Residential R3	25,018	40,029	64,046	102,474
Residential R4	156,356	250,170	400,271	640,434
Commercial C1	500	800	1,280	2,048
Commercial C2	22,680	36,288	58,061	92,897
Commercial C3	141,748	226,797	362,875	580,600
Industrial 1	1,000	1,600	2,560	4,096
Industrial D2	139,466	223,146	357,033	571,253
Industrial D3	141,748	226,797	362,875	580,600
Special 1	500	800	1,280	2,048
Special 2	46,728	74,766	119,625	191,400
Special 3	62,500	100,000	160,000	256,000
Street Lighting S1	500	800	1,280	2,048

Kaduna Disco – Energy Charge

Tariff Code	2012	2013	2014	2015
	<u>Energy Charge, N / kWh</u>			
Residential R1	4.00	4.00	4.00	4.00
Residential R2	12.69	13.96	15.36	16.90
Residential R3	23.33	25.66	28.23	31.05
Residential R4	23.33	25.66	28.23	31.05
Commercial C1	16.00	17.60	19.36	21.30
Commercial C2	21.68	23.85	26.24	28.86
Commercial C3	21.68	23.85	26.24	28.86
Industrial 1	17.50	19.24	21.17	23.29
Industrial D2	22.73	25.00	27.50	30.25
Industrial D3	22.73	25.00	27.50	30.25
Special 1	16.75	18.42	20.26	22.29
Special 2	16.75	18.42	20.26	22.29
Special 3	16.75	18.42	20.26	22.29
Street Lighting S1	14.19	15.61	17.17	18.89

Kano Disco – Fixed Charge

Tariff Code	2012	2013	2014	2015
	<u>Fixed Charge, N / Month</u>			
Residential R1	-	-	-	-
Residential R2	500	667	889	1,186
Residential R3	22,516	30,031	40,055	53,424
Residential R4	117,267	156,407	208,612	278,241
Commercial C1	500	667	889	1,186
Commercial C2	20,412	27,225	36,312	48,432
Commercial C3	106,311	141,795	189,122	252,245
Industrial 1	650	867	1,156	1,542
Industrial D2	104,600	139,512	186,077	248,184
Industrial D3	106,311	141,795	189,122	252,245
Special 1	500	667	889	1,186
Special 2	46,875	62,521	83,388	111,221
Special 3	62,500	83,361	111,184	148,294
Street Lighting S1	650	867	1,156	1,542

Kano Disco – Energy charge

Tariff Code	2012	2013	2014	2015
	<u>Energy Charge, N / kWh</u>			
Residential R1	4.00	4.00	4.00	4.00
Residential R2	12.78	13.42	14.09	14.80
Residential R3	23.40	24.57	25.80	27.09
Residential R4	23.40	24.57	25.80	27.09
Commercial C1	15.84	16.63	17.46	18.34
Commercial C2	21.75	22.84	23.98	25.18
Commercial C3	21.75	22.84	23.98	25.18
Industrial 1	17.55	18.43	19.35	20.32
Industrial D2	22.80	23.94	25.14	26.39
Industrial D3	22.80	23.94	25.14	26.39
Special 1	16.80	17.64	18.52	19.45
Special 2	16.80	17.64	18.52	19.45
Special 3	16.80	17.64	18.52	19.45
Street Lighting S1	12.90	13.55	14.22	14.93

Eko Disco -Fixed Charge

Tariff Code	2012	2013	2014	2015
	<u>Fixed Charge, N / Month</u>			
Residential R1	-	-	-	-
Residential R2	500	750	1,125	1,688
Residential R3	21,265	31,898	47,847	52,632
Residential R4	118,831	136,655	150,321	165,353
Commercial C1	500	750	1,125	1,688
Commercial C2	19,278	22,170	25,495	29,819
Commercial C3	107,728	118,501	130,351	143,387
Industrial 1	603	905	1,357	1,628
Industrial D2	105,994	116,594	129,300	142,330
Industrial D3	107,728	118,501	130,351	143,387
Special 1	500	750	975	1,463
Special 2	47,500	52,250	57,475	63,223
Special 3	53,125	58,438	64,281	70,709
Street Lighting S1	500	750	1,125	1,688

Eko Disco – Energy Charge

Tariff Code	2012	2013	2014	2015
	<u>Energy Charge, N / kWh</u>			
Residential R1	4.00	4.00	4.00	4.00
Residential R2	12.87	12.87	12.87	12.87
Residential R3	23.71	23.71	23.71	23.71
Residential R4	23.71	23.71	23.71	23.71
Commercial C1	15.84	15.84	15.84	15.84
Commercial C2	22.04	22.04	22.04	22.04
Commercial C3	22.04	22.04	22.04	22.04
Industrial 1	17.78	17.78	17.78	17.55
Industrial D2	23.10	22.10	23.10	23.10
Industrial D3	23.10	23.10	23.10	23.10
Special 1	17.02	16.02	17.02	17.02
Special 2	17.02	17.02	17.02	17.02
Special 3	17.02	17.02	17.02	17.02
Street Lighting S1	13.07	13.07	13.07	13.07

Ikeja Disco - Fixed Charge

Tariff Code	2012	2013	2014	2015
	<u>Fixed Charge, N / Month</u>			
Residential R1	-	-	-	-
Residential R2	500	750	895	1,067
Residential R3	17,513	26,269	31,332	37,371
Residential R4	109,449	164,174	195,818	233,561
Commercial C1	500	750	895	1,067
Commercial C2	15,876	23,814	28,404	33,879
Commercial C3	99,224	148,835	177,523	211,740
Industrial 1	500	1,000	1,193	1,423
Industrial D2	97,626	195,252	232,887	277,775
Industrial D3	99,224	198,447	236,697	282,320
Special 1	500	750	895	1,067
Special 2	35,938	43,125	51,437	61,352
Special 3	43,750	65,625	78,274	93,361
Street Lighting S1	500	650	775	925

Ikeja Disco – Energy Charge

Tariff Code	2012	2013	2014	2015
	<u>Energy Charge, N / kWh</u>			
Residential R1	4.00	4.00	4.00	4.00
Residential R2	12.45	12.83	13.21	13.61
Residential R3	21.84	22.50	23.17	23.87
Residential R4	21.84	22.50	23.17	23.87
Commercial C1	16.56	17.06	17.57	18.10
Commercial C2	20.30	20.91	21.54	22.18
Commercial C3	20.30	20.91	21.54	22.18
Industrial 1	16.38	16.87	17.38	17.90
Industrial D2	21.28	21.92	22.58	23.25
Industrial D3	21.28	21.92	22.58	23.25
Special 1	15.68	16.15	16.63	17.13
Special 2	15.68	16.15	16.63	17.13
Special 3	15.68	16.15	16.63	17.13
Street Lighting S1	12.04	12.40	12.77	13.16

P/Harcourt - Fixed Charge

Tariff Code	2012	2013	2014	2015
	<u>Fixed Charge, N / Month</u>			
Residential R1	-	-	-	-
Residential R2	500	700	1,050	1,575
Residential R3	25,018	35,025	52,538	78,807
Residential R4	117,267	164,174	246,261	369,391
Commercial C1	500	700	1050	1, 575
Commercial C2	22,680	31,752	47,628	71,442
Commercial C3	106,311	148,835	223,253	334,880
Industrial 1	700	980	1470	2,205
Industrial D2	104,600	146,439	219,659	329,488
Industrial D3	106,311	148,835	223,253	334,880
Special 1	700	980	1,470	2,205
Special 2	46,875	65,625	98,438	147,656
Special 3	62,500	87,500	131,250	196,875
Street Lighting S1	700	980	1,470	2,205

P/Harcourt Disco – Energy Charge

Tariff Code	2012	2013	2014	2015
	<u>Energy Charge, N / kWh</u>			
Residential R1	4.00	4.00	4.00	4.00
Residential R2	12.82	13.21	13.60	14.01
Residential R3	23.40	24.10	24.83	25.57
Residential R4	23.40	24.10	24.83	25.57
Commercial C1	17.20	17.72	18.25	18.79
Commercial C2	21.75	22.40	23.07	23.77
Commercial C3	21.75	22.40	23.07	23.77
Industrial 1	23.40	24.10	24.83	25.57
Industrial D2	22.80	23.48	24.19	24.91
Industrial D3	22.80	23.48	24.19	24.91
Special 1	16.80	17.30	17.82	18.36
Special 2	16.80	17.30	17.82	18.36
Special 3	22.40	23.07	23.76	24.48
Street Lighting S1	17.20	17.72	18.25	18.79

Yola Disco -Fixed Charge

Tariff Code	2012	2013	2014	2015
	<u>Fixed Charge, N / Month</u>			
Residential R1	-	-	-	-
Residential R2	500	750	1,250	1,960
Residential R3	16,137	24,205	40,355	63,244
Residential R4	100,850	152,274	252,206	395,259
Commercial C1	500	750	1,250	1,960
Commercial C2	14,629	21,943	36,583	57,334
Commercial C3	91,427	137,141	228,643	358,331
Industrial 1	500	750	1,250	1,960
Industrial D2	89,956	134,933	224,962	352,562
Industrial D3	91,427	137,141	228,643	358,331
Special 1	500	750	1,250	1,960
Special 2	34,375	44,688	74,503	116,762
Special 3	40,313	60,469	100,814	157,996
Street Lighting S1	500	750	1,250	1,960

Yola Disco – Energy Charge

Tariff Code	2012	2013	2014	2015
	<u>Energy Charge, N / kWh</u>			
Residential R1	4.00	4.00	4.00	4.00
Residential R2	11.32	12.17	12.78	13.42
Residential R3	20.28	21.63	22.71	23.85
Residential R4	20.28	21.63	22.71	23.85
Commercial C1	15.84	17.03	17.88	18.77
Commercial C2	18.71	20.11	21.11	22.17
Commercial C3	18.71	20.11	21.11	22.17
Industrial 1	15.09	16.22	17.04	17.89
Industrial D2	19.61	21.08	22.13	23.24
Industrial D3	19.61	21.08	22.13	23.24
Special 1	14.45	15.53	16.31	17.12
Special 2	14.45	15.53	16.31	17.12
Special 3	14.45	15.53	16.31	17.12
Street Lighting S1	11.09	11.93	12.52	13.15